



- Development Partnership
- Building Collective Impact for Sustainable Development
- Accelerating Mining for Development

Pilot Initiatives:

- *Mining Innovation and Research Battlefield*
- *Responsible Sourcing Coalition*

Responsible Sourcing Coalition (RESCO)

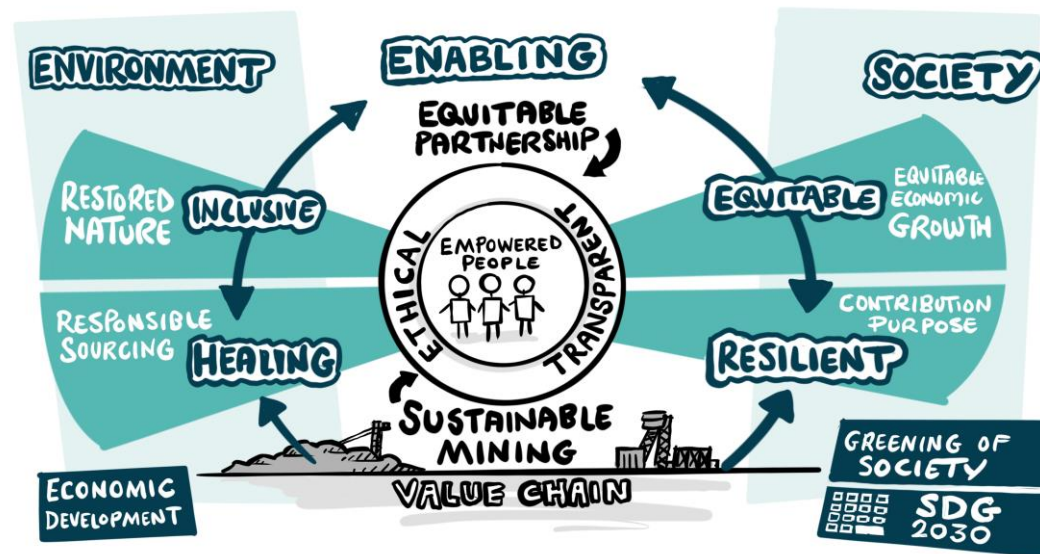
APPROACH

- **Gap analysis** (plethora of standards)
- **In-depth interviews with young people** (Latin America / Australia / Africa)
- Shift from sole focus on risk and compliance – systemic change of mining value chain – desired state **The Future is X 2040**
- **Youth – 18-25** (PhD's, engineer, social workers, metallurgists, procurement, indigenous community)
- **Interactive Dialogue** regional and global workshops with young people and mining community voices (complimenting)
 - Economic
 - Social
 - Environmental

LEARNING

- Development partnership (co-creating) – Future 2040
- Geo-political shifts and resource scarcity and 'competition' demonstrates the absence and necessity of neutral platforms
- Young and communities do not have one voice - representation ?
- Diversity of thought and access to diversity of thought - access to diversity of thought
- Voice beyond the board room
- Reconfiguration of mining value chain – economic prosperity - social impact - environmental prosperity has an interrelated tripartite arrangement for the young people – development underpins thinking for Latin America & Africa (E.g. value addition, beneficiation, industrial policy, economic linkages)
- Begin conversations prior to or during the exploration phase

RESCO



THE GLOBAL VISION



IN 2040, THERE IS SOLIDARITY ACROSS THE MINING VALUE CHAIN FOR WHAT IT MEANS TO SOURCE RESPONSIBLY. THIS INCLUDES UNDERSTANDING THE OPPORTUNITIES, CHALLENGES AND THE IMPACTS ON SOCIETY.

PROTECTING THE ENVIRONMENT IS A KEY CONSIDERATION ACROSS THE VALUE CHAIN BEFORE, DURING AND AFTER MINING EXTRACTION AND THROUGHOUT THE VALUE CHAIN; BOTH FOR ORIGINALLY SOURCED AND REUSED OR RECYCLED MATERIALS. NEW MINES PROVIDE NET POSITIVE ENVIRONMENTAL BENEFITS FOR LAND, BIODIVERSITY, CLIMATE, AND WATER. RECYCLING AND REUSE OF MINED MATERIALS ARE MAXIMISED.

ALL ACTORS IN THE VALUE CHAIN ARE HEARD BY ONE ANOTHER AND TREATED FAIRLY AND WITH RESPECT. SOURCING EFFORTS CATALYSE SOCIAL AND ECONOMIC DEVELOPMENT, PULL PEOPLE OUT OF POVERTY, SIGNIFICANTLY REDUCE INEQUALITY AND PROVIDE EQUITABLE COMMERCIAL OPPORTUNITIES (IN MINING AND OTHER SECTORS), LOCALLY AND GLOBALLY, LEADING TOWARDS ECONOMIC DIVERSITY AND RESILIENT SOCIETIES.

INDIGENOUS PEOPLE (OWNERS OF LAND), RIGHTS HOLDERS, AND COMMUNITIES ARE INTEGRATED INTO DECISION-MAKING AS EQUITABLE PARTNERS. THERE IS INCREASINGLY MORE DIRECT COMMUNICATION WITH CONSUMER-FACING COMPANIES.

RELIABLE DATA IS USED TO ENHANCE TRANSPARENCY AND INFORM DECISION MAKING AND ACTIONS ACROSS THE VALUE CHAIN. CONSUMERS UNDERSTAND THE ORIGINS OF THEIR PRODUCTS AND THE MANNER IN WHICH THEY ARE SOURCED.

THE VALUE CHAIN HAS WORKED TOGETHER WITH OTHER INDUSTRIES, RELEVANT ACTORS, AND DEVELOPMENT PARTNERS TO DRIVE FORWARD BUSINESS CONTRIBUTIONS TO THE SUSTAINABLE DEVELOPMENT GOALS BY 2030. IN 2040, THERE IS CONTINUED MOMENTUM AND COLLABORATION TO ACHIEVE GLOBAL TARGETS OF NET ZERO BY 2050 AND BEYOND.





RESPONSIBLE SOURCING ENVIRONMENTAL SUSTAINABILITY

WE SHOULD ACKNOWLEDGE INDIGENOUS PEOPLE AROUND THE WORLD

2040 THE WAY FORWARD

- * VALUE CHAIN
- * KNOWLEDGE TRANSFER
- * SYSTEM CHANGE

WHAT WILL IT LOOK LIKE?
RENEWABLES DISPLACE FOSSIL FUELS SLOWLY...

HELP GET TO BETTER STANDARDS



IN 2040 EFFICIENCY IN MINING WILL REDUCE IMPACTS IN SENSITIVE AREAS...



WHAT DO MINING COMPANIES DO WHEN THEY LEAVE...



DEVELOPING COUNTRIES CONSIDER IMMEDIATE DEVELOPMENT NEEDS TOGETHER WITH THE ENVIRONMENT

- * PROTECT ENVIRONMENT
- * PROTECT WORKERS...



ECONOMICS

ECONOMIC SUSTAINABILITY

OPTIMIZED MINES, NEED PRODUCTION, VALUE THROUGHOUT, NEED EFFICIENT MATERIALS, NEED BENEFIT FROM MINING, NEED RESILIENT ECONOMIC SYSTEMS

THE FUTURE VISION

ZERO WASTE (with icons for recycling and waste)

THE CIRCULAR ECONOMY

THE NEWS IN 2040 (with a smartphone icon): "MINES ARE THE NEW BLACK!"

SHARED VALUE BECOMES EQUITABLE DISTRIBUTION BENEFIT SHARING

THE WORLD IN 2040 NEEDS RESILIENCE NO MATTER WHAT!!

NETZERO (with a recycling symbol)



SUSTAINABILITY PRINCIPLES

WHAT ASPECTS MUST WE CONSIDER??

WHAT IS THE VISION?

GOVERNANCE HAS ESG EMBEDDED

EMPOWERED CITIZENSHIP

LOCAL DEVELOPMENT ~ A HUB

REGULATE MINERS

WATER IS KEY

ESG (with icons for environment, social, and governance)

DATA (with icons for charts and graphs)

MINIMUM WATER USE

IT'S EASY TO UNDERSTAND

IF PEOPLE DON'T PAY FOR SUSTAINABLE PRODUCTS

IF PERU WATER MUST BE USED WELL!!



FINDING OUR VALUES AND OUR PRINCIPLES...

VALUES

EQUITY, INCLUSION, RESPECT, INTEGRITY, ZGENERATIONS, WELLBEING, COURAGE, RESILIENCE, VALUE IS MORE THAN MONEY, TRANSPARENCY

PRINCIPLES

EVERYONE AT THE TABLE EARLY, JUSTICE, UNDERSTANDING COMMUNITY INTERESTS & CONCERNS FIRST, MEASURE TRANSPARENCY, MINIMISE WATER ENERGY, PHYSICAL, TELL THE GOOD MINING & BUSINESS STORIES

RESCO (Projects)

RESCO HUB & Market Place

Hub

One stop shop for responsible sourcing – categorized by region, technology, end-use

Market Place

innovation platform; a space for new ideas to meet expertise and funding

Propagate RESCO

Internal and external – influencing the narrative beyond compliance

Structural Inequality Across the Mining Value Chain

Co-creating successful sustainable responsible sourcing approaches, not perceived as purely extractive, requires power to be balanced and for those most impacted to have the necessary influence and agency to guide good practice.

RESCO Community Collective

Creating Spaces of knowledge and dialogue spaces

Community engagement will continue to be the focus of investor scrutiny for this year and beyond (EY, Top Ten Business Risks for Mining 2022) and an important priority for all in the value chain.

Mining Innovation and Research Battlefield

OBJECTIVES



DEVELOP AND TEST
SOLUTIONS



INCREASE THE PROFILE
AND CONTRIBUTION TO
RESEARCH



STRENGTHEN
COLLABORATIONS



ENGAGE YOUNG PEOPLE



CONNECT RESEARCHERS,
ACADEMIA, STUDENTS
AND ORGANIZATIONS

Mining Innovation and Research Battlefield

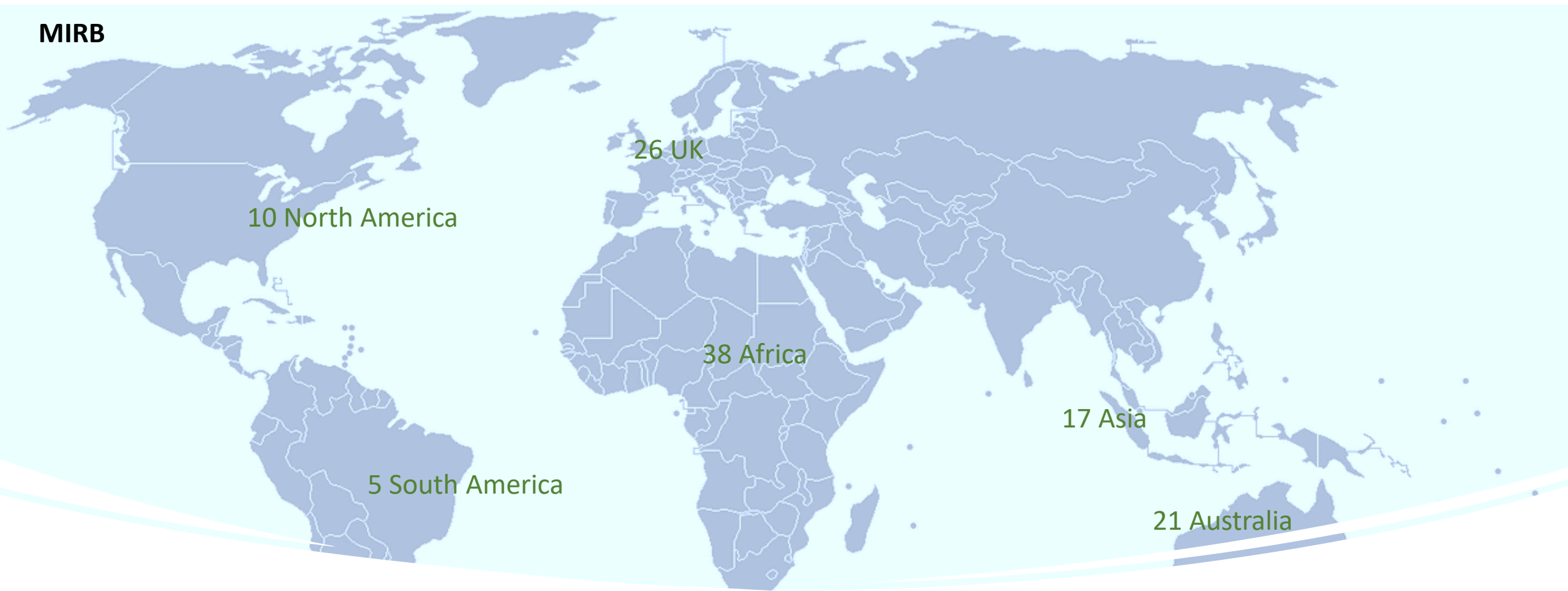
Approach

- **Annual Competition**
- **Innovation Grant (\$25K)**
- **Partnership**
 - Hyve / **Mining Indaba** (Host)
 - BHP Xplor (Innovation Grant)
 - Brunswick Group (Coaching)
- **Questions are relevant to today's challenges**
 - 2022 Building sustainable post mine legacies
 - 2024 ASM and LSM collaboration for energy transition
- **Intention is Result** - Collaborative approach and problem solving
- **Scoring** higher if demonstrate link to:
 - SDG's (communities)
 - Collaborative
 - Scalable
 - Social licence to operate
- **Innovation** as the Focus – selection committee (E.g. 2022)

Learning

- Engagement and thought leadership early on in career
- Begin conversations prior to or during the exploration phase
- **Alumni of Researchers** (voices may not be in the mainstream or amplified)
- Voice beyond the board room – increasing the space for decision making
- Voices beyond existing paradigms

MIRB



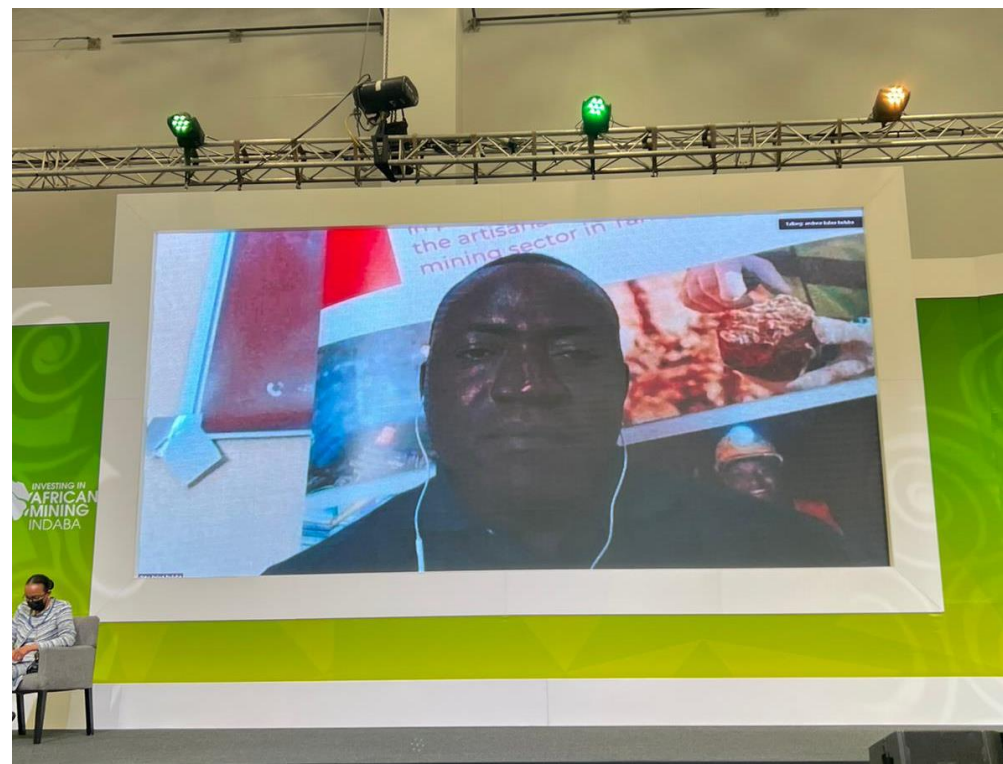
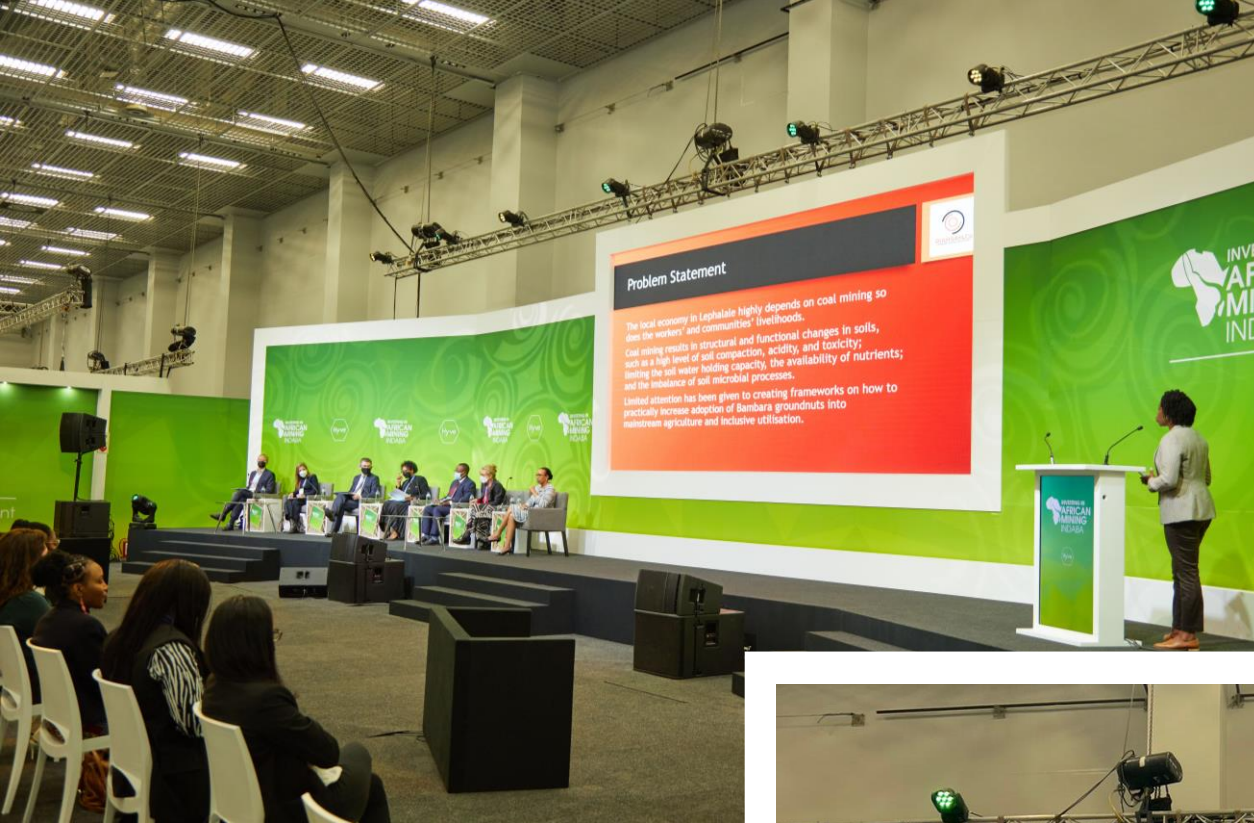
Projects

- Regenerative Agriculture
- Intuitional pathways to sustainable post mine economies
- Carbon manufacturing plant using Coconut Shells
- Youth Legacy (education and health)
- Mine design for sustainable development

Results

- ✓ Innovation Grant (\$25K)
- ✓ Mentoring (Michelle)
- ✓ WIM 100
- ✓ Links with researchers and Industry
- ✓ Peer to Peer learning Networking









-
- Thank you

Questions

